



HOME |

ELEVATOR SERIES



Home elevator component system solution provider

Customized solution · Create noble space

Multiple customization schemes to adapt to various application environments.

Diversified decoration design scheme to meet personalized needs.

Intelligent interactive · Enjoy a happy life

Intelligent human-computer interaction, integration into life scenes, and beautification of living environment.

Safe and reliable · Stable performance

Standard products, integrated manufacturing, provide sustainable and stable products.

CONTENTS

H2 small shaft platform home elevator package solution	01
H3 small shaft sightseeing home elevator package solution	05
H5 standard sightseeing home elevator package solution	09
H6 civil construction shaft home elevator package solution	13
H7 bottom-mounted drive home elevator package solution	17
Configuration Selection Table	21
Decoration Selection Table	22
Function configuration table	27

H2 small shaft platform home elevator package solution

Safe and reliable

Three sided safety frame protection, no fear of pressing or foreign objects getting stuck

Compact structure

The utilization rate of the shaft is over **65%**, and the top height of the small shaft is low, the depth of the bottom pit is shallow

Quiet and comfortable

Adopting composite steel belt transmission, SIL3 level contactless control technology, with operating noise less than 45 decibels

Energy saving and environmental protection

Permanent magnet synchronous traction machine, vector frequency conversion control, green, energy-saving, and environmentally protection



H2 small shaft platform home elevator package solution



H2-001

Backboard : H2-B01
Floor : PVC
Handrail : SL-3305BE
Outer frame : B540P

H2-002

Backboard : H2-B02
Floor : PVC
Handrail : SL-3305BE
Outer frame : B540P

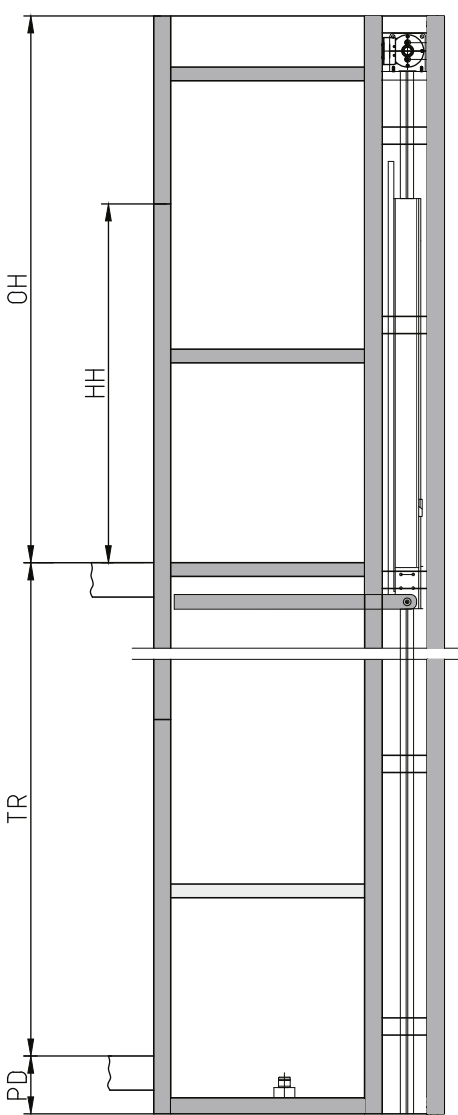
H2-003

Backboard : H2-B04
Floor : PVC
Handrail : SL-3305BE
Outer frame : B605P

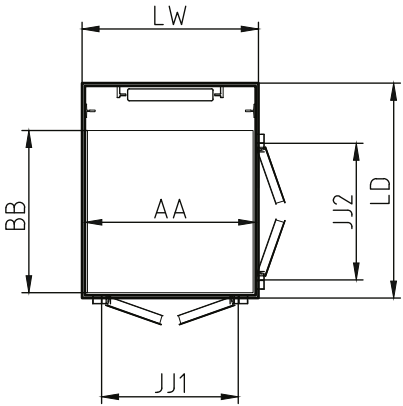
H2-004

Backboard : H2-B02
Floor : PVC
Handrail : SL-3305BE
Outer frame : B540P

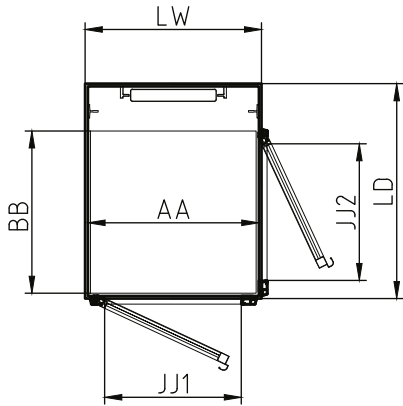
LAYOUT



Shaft elevation view



Automatic swing door shaft plan



Hand sliding door shaft plan

(kg)	LW(mm)	LD(mm)	AA(mm)	BB (mm)	JJ1(mm)	JJ2(mm)	HH(mm)	OH(mm)	PD(mm)
260	832	1058	800	750	600	600	2000	2600	150
	932	1058	900	750	700	600	2000	2600	150
	1032	1058	1000	750	800	600	2000	2600	150
320	1132	1058	1100	750	800	600	2000	2600	150
	1032	1158	1000	850	800	700	2000	2600	150
	1232	1258	1200	950	800	800	2000	2600	150

H3 small shaft sightseeing home elevator package solution

Flexible installation

No need for pit, Unique dual-track design with built-in shaft

Small and exquisite

Small shaft, exquisite decoration, rich decoration configuration, humanized design

Security

Automatic fault rescue, backup power supply to ensure automatic leveling of the elevator, Open the door to allow passengers to exit safely

Intelligent interconnection

5G interconnection, intelligent voice recognition operation, Can be controlled remotely while traveling



H3 small shaft sightseeing home elevator package solution

LAYOUT



H3-001
Suspended ceiling : SL-2253J
Decorative panel : Solid wood multi-layer board
Floor : SL-4274P PVC
Framework : B540P



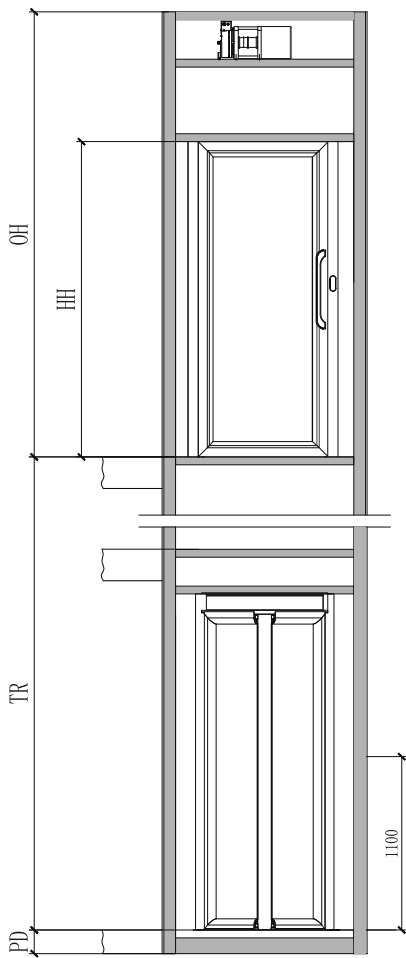
H3-002
Suspended ceiling : SL-2253J
Decorative panel : Solid wood multi-layer board
Floor : SL-4274P PVC
Framework : J118P



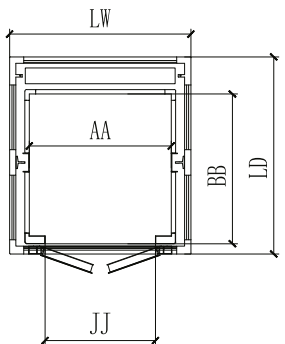
H3-003
Suspended ceiling : SL-2253J
Decorative panel : Solid wood multi-layer board
Floor : SL-4274P PVC
Framework : B605P



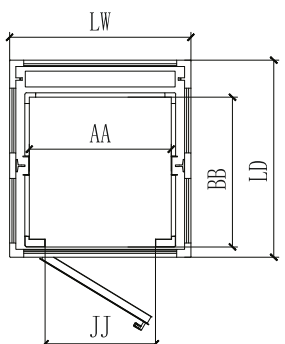
H3-004
Suspended ceiling : SL-2805
Decorative panel : Solid wood multi-layer board
Floor : SL-4257D
Framework : J119P



Shaft elevation view



Automatic swing door shaft plan



Hand sliding door shaft plan

(kg)	LW(mm)	LD(mm)	AA(mm)	BB (mm)	CH(mm)	JJ(mm)	HH(mm)	OH(mm)	PD(mm)
260	982	1100	700	800	2000	650	2000	2750	150
	1032	1100	750	800	2000	700	2000	2750	150
	1082	1100	800	800	2000	750	2000	2750	150
	1132	1100	850	800	2000	800	2000	2750	150
	1182	1100	900	800	2000	700	2000	2750	150
320	1432	1100	1150	800	2000	800	2000	2750	150
	1382	1150	1100	850	2000	800	2000	2750	150
	1482	1200	1200	900	2000	800	2000	2750	150
	1232	1250	950	950	2000	750	2000	2750	150
	1282	1250	1000	950	2000	800	2000	2750	150
	1432	1250	1150	950	2000	800	2000	2750	150

H5 standard sightseeing home elevator package solution

Safe and reliable

Smooth operation, one click call to prevent passengers from being trapped in the elevator due to power outages, ensuring passage safety

Compact structure

The utilization rate of the shaft is high, and the same bearing carring can reduce the space for customers by **30%**

Quiet and comfortable

Adopting composite steel belt transmission, and vector frequency conversion control, the operating noise is less than 45 decibels

Various installations

Floor openings, surrounding the middle of stairs, outdoor stairs, and adjacent buildings, compatible with various installation environments



H5 standard sightseeing home elevator package solution

LAYOUT



H5-001
Suspended ceiling : SL-2802
Decorative panel : Solid wood multi-layer board
Floor : SL-4257D
Framework : SL-2802



H5-002
Suspended ceiling : SL-2808
Decorative panel : Solid wood multi-layer board
Floor : SL-4257D
Framework : B605P

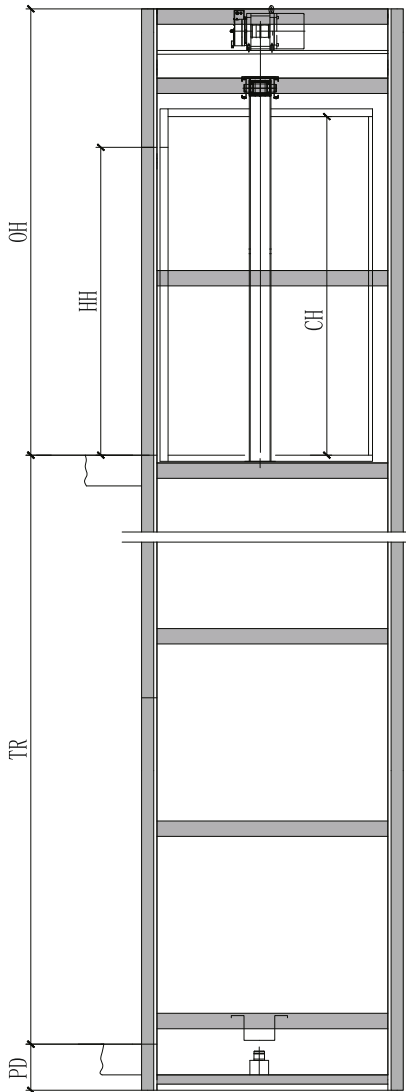


H5-003
Suspended ceiling : SL-2807
Decorative panel : Solid wood multi-layer board
Floor : SL-4257D
Framework : J118P

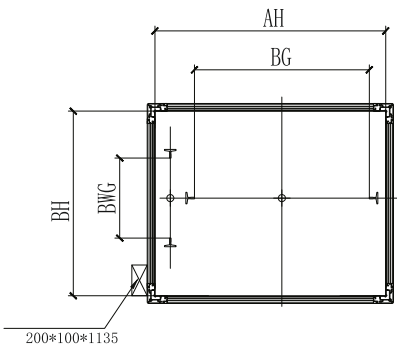


H5-004
Suspended ceiling : SL-2805
Decorative panel : Solid wood multi-layer board
Floor : SL-4257D
Framework : J119P

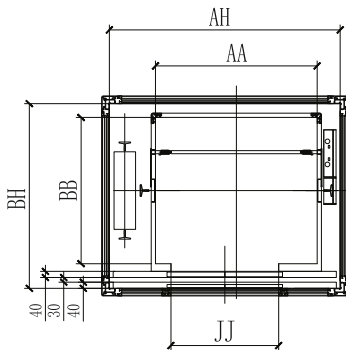
Shaft elevation view



Rail layout diagram



Layout plan of shaft



(kg)	LW(mm)	LD(mm)	AA(mm)	BB (mm)	CH(mm)	JJ(mm)	HH(mm)	OH(mm)	PD(mm)
260	1400	1100	950	800	2100	650	2000	3000	300
	1450	1100	1000	800	2100	650	2000	3000	300
320	1500	1100	1050	800	2100	700	2000	3000	300
	1600	1100	1150	800	2100	750	2000	3000	300
	1700	1100	1250	800	2100	800	2000	3000	300
400	1700	1300	1250	1000	2100	800	2000	3000	300
	1700	1400	1250	1100	2100	800	2000	3000	300
	1700	1500	1250	1150	2100	800	2000	3000	300

H6 civil construction shaft home elevator package solution

Safe and reliable

Integrating multiple anti-trapped passenger solutions, passenger will no longer be trapped in the elevator and ensure passenger safety.

Compact structure

The utilization rate of the shaft is high, and the same bearing carring can reduce the space for customers by **30%**

Quiet and comfortable

Adopting composite steel belt transmission, SIL3 level contactless control technology, with operating noise less than 45 decibels

Energy saving and environmental protection

Permanent magnet synchronous traction machine, vector frequency conversion control, green, energy-saving, and environmentally friendly



H6 civil construction shaft home elevator package solution



SL-1080
Suspended ceiling : SL-2080J
Rear wall : Hairline stainless steel
Side wall : Hairline stainless steel
Floor : SL-4080P PVC



SL-1164
Suspended ceiling : SL-2299J
Rear wall : Mirror stainless steel
Side wall : Mirror stainless steel
Floor : SL-4060D

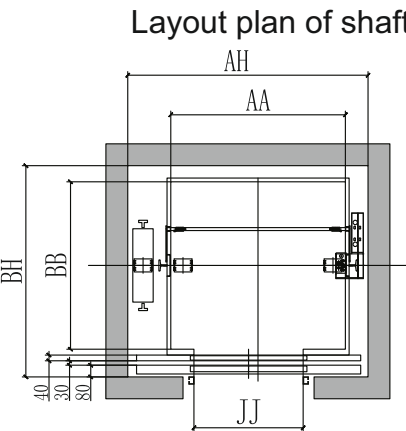
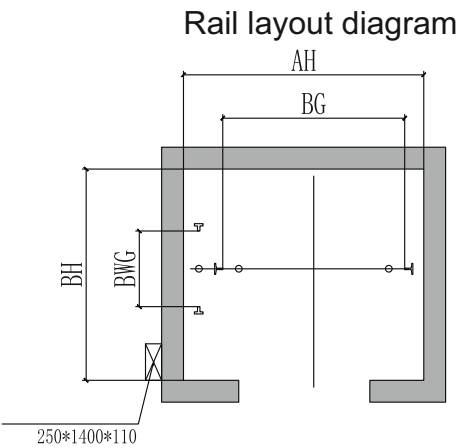
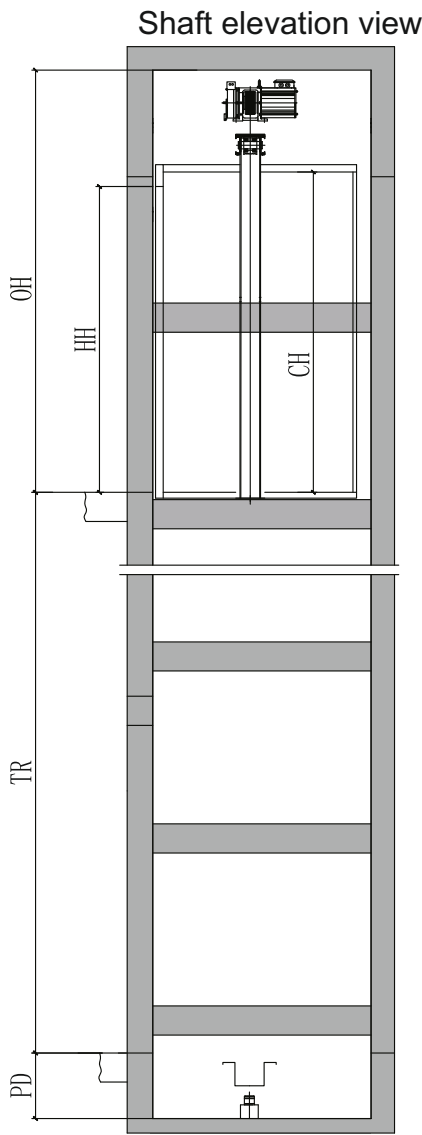


SL-1154
Suspended ceiling : SL-2239
Rear wall : Titanium mirror stainless steel
Side wall : Titanium mirror stainless steel
Floor : SL-4150D



SL-1167
Suspended ceiling : SL-2306
Rear wall : SL-8215
Side wall : SL-8215
Floor : SL-4262 PVC

LAYOUT



(kg)	LW(mm)	LD(mm)	AA(mm)	BB (mm)	CH(mm)	JJ(mm)	HH(mm)	OH(mm)	PD(mm)
260	1450	1100	1000	800	2200	650	2000	3000	300
	1700	1150	1250	850	2200	750	2000	3000	300
320	1750	1150	1250	850	2200	800	2000	3000	300
	1650	1200	1200	900	2200	750	2000	3000	300
400	1700	1350	1250	1050	2200	750	2000	3000	300
	1750	1350	1250	1050	2200	800	2000	3000	300
	1750	1400	1250	1100	2200	800	2000	3000	300
	1750	1450	1250	1100	2200	800	2000	3000	300

H7 bottom-mounted drive home elevator package solution

Safe and reliable

Integrating multiple anti-trapped passenger solutions, passenger will no longer be trapped in the elevator and ensure passenger safety.

Compact structure

The utilization rate of the shaft is high, and the same bearing carring can reduce the space for customers by **30%**

Energy saving and environmental protection

Permanent magnet synchronous traction machine, vector frequency conversion control, green, energy-saving, and environmentally friendly



H7 bottom-mounted drive home elevator package solution

LAYOUT



SL-1080
Suspended ceiling : SL-2080J
Rear wall : Hairline stainless steel
Side wall : Hairline stainless steel
Floor : SL-4080P PVC



SL-1089
Suspended ceiling : SL-2089J
Rear wall : SL-8055
Side wall : SL-8055
Floor : SL-4083D

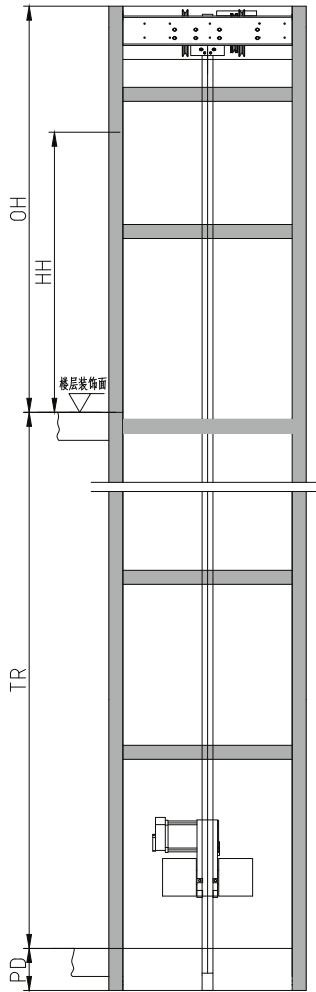


H7-001
Suspended ceiling : SL-2802
Decorative panel : Multi layer solid wood board
Floor : SL-4274P PVC
Framework : B540P

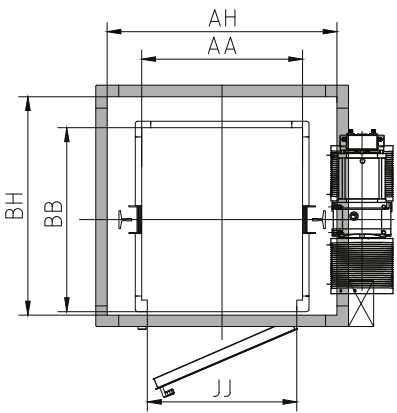


H7-002
Suspended ceiling : SL-2808
Decorative panel : Multi layer solid wood board
Floor : SL-4274P PVC
Framework : B605P

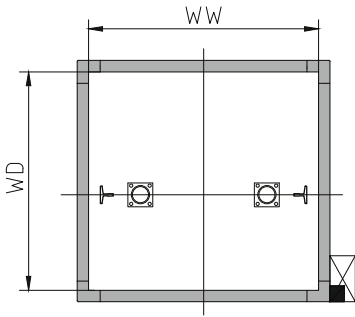
Shaft elevation view



Plan of shaft



Pit Plan



(kg)	AH(mm)	BH(mm)	LW(mm)	LD(mm)	AA(mm)	BB(mm)	CH(mm)	JJ(mm)	HH(mm)	OH(mm)	PD(mm)
260	1000	950	1100	1050	700	800	2200	650	2000	3000	300
	1050	1050	1150	1150	750	900	2200	700	2000	3000	300
320	1500	1050	1600	1150	1200	900	2200	800	2000	3000	300
	1400	1100	1600	1200	1100	950	2200	800	2000	3000	300
	1350	1150	1450	1250	1050	1000	2200	800	2000	3000	300
	1300	1200	1400	1300	1000	1050	2200	800	2000	3000	300
	1500	1200	1600	1300	1200	1050	2200	800	2000	3000	300
	1250	1250	1350	1350	950	1100	2200	800	2000	3000	300
	1300	1250	1400	1350	1000	1100	2200	800	2000	3000	300
400	1500	1250	1600	1350	1200	1100	2200	800	2000	3000	300

● Standard configuration ○ Optional configuration — No such configuration

	H2	H3	H5	H6	H7
Minimum Hoistway outer size	832*1058	950*1100	—	—	—
Maxmum Hoistway outer size	1232*1258	1450*1400	—	—	—
Minimum Hoistway inside size	—	—	1400*1050	1450*1100	1100*950
Maxmum Hoistway inside size	—	—	1700*1500	1750*1550	1400*1250
Minimum car size	800*750	700*800	950*800	1000*800	800*800
Maxmum car size	1200*950	1200*1100	1250*1250	1250*1250	1100*1100
Car height	—	2000	2100	2100	2200
Min Top	2500	2800	2900	2900	2900
Minimum pit	150	150	300	300	200
Minimum door opening width	600	650	650	650	750
Maxmum door opening width	800	800	800	800	800
Door height	2000	2000	2000	2000	2000
Single sided door opening	●	●	●	●	●
Through door opening	○	—	○	○	○
Three sided door opening	○	—	—	—	—
Top floor of control cabinet	●	●	●	●	○
Bottom floor of control cabinet	○	○	○	○	●
Control cabinet on any floor	○	○	○	○	○
Mechanical buttons COP	—	—	—	○	—
10.1 inches COP	●	●	●	●	●
Touch LOP	●	●	●	●	●
Mechanical buttons LOP	—	—	—	○	—
Voice/gestures LOP	○	○	○	○	○
Aluminum alloy Hoistway	●	●	●	○	●
Civil construction/steel Hoistway	—	—	○	●	○
Aluminum alloy sliding door	●	●	—	—	●
Automatic leveling door opening	○	○	—	—	○
Automatic CO opening door	—	—	●	●	○
Automatic 2CO opening door	—	—	○	○	○
Automatic side opening double folding door	—	—	○	○	○
PVC Flooring	●	●	●	●	●
Marble floor	—	○	○	○	○

ALUMINUM ALLOY HOISTWAY FRAME
(APPLICABLE TO H2,H3,H5)



Pearl White



Mo Yuan Black



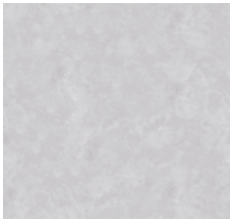
Champagne



Champagne

FLOOR SERIES

PVC



SL-4273P



SL-4265P



SL-4260D

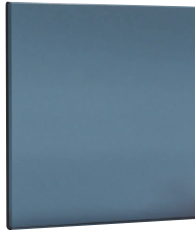


SL-4267D

GLASS (APPLICABLE TO H2,H3,H5)



White glass



Blue Star Grey Glass

(H2, H3, H7)

HAND SLIDING DOOR



Pearl White



Champagne



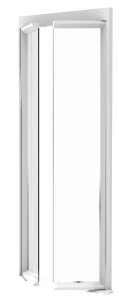
Mo Yuan Black



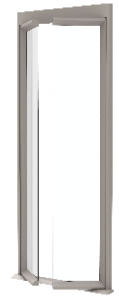
Brown Coffee

(H2, H3,)

AUTOMATIC FLAT DOOR



Pearl White



Champagne



Mo Yuan Black



Brown Coffee

(H5)

AUTOMATIC FLAT DOOR



Pearl White



Champagne



Mo Yuan Black



Brown Coffee

(H6, H7,)

CO LANDING DOOR



Hairline stainless steel



Mirror stainless steel



Black titanium hairline stainless steel



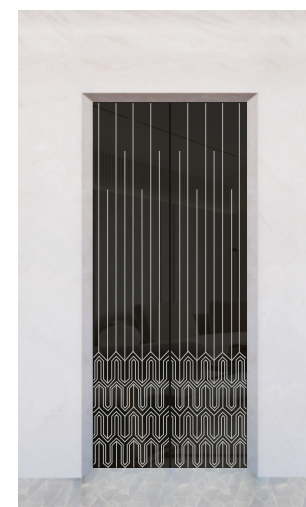
Bronze Hair Pattern Etching



Rose Blond Etching



Rose gold mirror etching



Black titanium mirror etching



Bronze color ultra precision mirror etching



Titanium mirror etching

INTERFACE

The COP designed according to ergonomics is responsive and easy to operate; the landing display clearly and quickly displays various numbers and symbols



DL1300B

Embedded, hairline stainless steel, black background with white text LCD



DL130B

With rear box, hairline stainless steel, black background with white text LCD



DC3000A

Mounted, mirror panel color screen



DC4300A

Semi embedded type



DL463

Mounted type



FUNCTION

●	Emergency lighting in the car	When the lighting power fails, automatically provide rechargeable emergency power for the lighting in the car
●	Hall and Car Call/Registration	Register and store the call instructions in the hall and car and the button light is on at this time
●	Full load without stopping	When the load in the car reaches the preset value of full load, it will enter the full-load direct driving state, and the elevator will no longer answer the calls from outside the hall, but will directly respond to the instructions in the car to reach the designated floor.
●	Overload does not start (warning light and buzzer)	When the load of the car exceeds the rated allowable load, the overload buzzer will sound to indicate the overload. At this time, it shows overload, and the elevator cannot start.
●	Operation count display function	For the convenience of maintenance, a counter is set in the elevator control cabinet to count the total number of times the elevator runs.
●	Control cabinet emergency electric operation	Place maintenance operation switches, maintenance buttons and emergency stop devices on the car top and machine room. Car top maintenance takes precedence over machine room maintenance. After the maintenance operation starts, the car is prohibited from moving in response to other operations except for maintenance-related operations.
●	Car ventilation and lighting automatic control function	The fan and lighting are automatically controlled by the system according to the operating conditions of the elevator.
●	Suspend service output function	When the elevator cannot respond to the hall call, the corresponding terminal will output a service suspension signal.
●	Automatic fault detection function	Automatically detect all faults that occur in the elevator system.
●	Alarm bell	In special circumstances, passengers can notify the outside world in time by pressing the alarm button in the car.
●	Light curtain door protection device	The door light curtain protection system forms an invisible light curtain protection safety net at the elevator door. Once the light is disturbed, the elevator will stop immediately. It cannot be restarted until it returns to normal.
●	Bottom bumper	Set buffer parts at the bottom of the hoistway to ensure the safety of passengers/cargo
●	Do not open the door outside the gate area	When the elevator is not in the door opening area, the hall door cannot be opened
●	Pre-torque output	The system predetermines the output torque according to the load of the car, so that the elevator can start smoothly
●	Contactor feedback detection function	When the contactor fails, the system will record the failure and enter the self-protection state
●	Grid voltage fluctuation detection function	When the grid voltage fluctuates too much, the system enters the self-protection state
●	Relay check protection	When the relay fails, the system will record the failure and enter the self protection state.
●	Speed feedback detection function	When the elevator running speed is abnormal, the system enters the protection state.
●	Fault low-speed self-rescue function	When the elevator is in the non-inspection state and does not stop at the leveling area. At this time, as long as the safety requirements for starting are met, the elevator will automatically run to the nearest leveling area at a slow speed, and passengers can leave the elevator safely by opening the door.

● Standard ○ Optional

●	Non-stop layer setting	No stop when passing the set floor
●	Well self-learning	In the maintenance state, it runs upwards from the lower limit switch to the upper limit switch, measures the position of the door area of each floor and the position of the hoistway switch, and saves it permanently.
●	Reverse run protection	When the system detects that the running direction of the elevator is inconsistent with the command direction for 3 seconds, it will immediately stop in an emergency, give a fault alarm, and prohibit all actions of the elevator before the CUP is reset.
●	Safety Loop Protection	The safety circuit is disconnected, and the elevator will stop running immediately.
●	Limit protection	The system detects the action of the limit switch and will stop the elevator running immediately.
●	Upper and lower limit protection device	When the set time is exceeded and there is still no running command, it will automatically cut off the power supply of lighting and fans in the car.
●	Reverse call cancel	When the system detects the action of the limit switch, the entire system will be powered off immediately.
●	Door chain protection	All door chains are closed before the elevator can run. If the door interlock breaks or vibrates during operation, the elevator will stop running.
●	Run contactor protection	The system can detect whether the action of the motor circuit contactor is reliable. If an abnormality is found, the elevator will be stopped.
●	Brake detection protection	Real-time monitoring of the opening and closing of the brake through the brake arm detection switch. When the brake is not opened as required, the system will terminate the elevator start.
●	Electric brake release rescue	In the unbalanced state, the remote electric brake is released, the car slides slowly, and the car automatically alarms after entering the entrance area, and the door is manually opened for rescue.
●	End station speed change and floor number correction	After the system detects the terminal switch during operation, the elevator will force the speed change and automatically correct the floor display.
●	Manual layer selection	The internal selection registration is performed through the key operation of the liquid crystal display in the control cabinet.
●	Driver overheating protection	When the temperature of the main unit exceeds the set value, the system stops power supply and is forced to stop.
●	Power failure emergency leveling	When the external power grid is in a power-off state: If the elevator is not at the leveling position, the power failure emergency rescue system will rely on its own power supply system to control the elevator to run to the leveling position at the inspection speed in the direction of light load, and open the elevator door lock; If the elevator is in the leveling position, the power failure emergency rescue system will control the elevator to open the elevator door lock.
○	Emergency backup power operating device	When the mains power fails and the owner's backup power supply is put into use, the EPO will automatically switch the elevator to the backup power supply, and the elevator will return to normal running after the slow car reaches the lowest level; when the mains power is restored, the EPO will automatically switch the elevator to Mains power supply, the elevator returns to normal running after the slow car travels to the lowest level
○	Voice Announcement	When the car arrives at the landing station, a voice message will be played automatically to remind passengers.
○	Card reader	When the first floor is open and outsiders are easy to access, you can choose an IC card reader to control the call.
○	Internet of things	24-hour online monitoring, you can log in on the IE browser to monitor the running status and important parameters of the elevator. Maintenance records, regular sending of operation reports, failure records and failure warnings of important components, etc. At the same time, it can remotely guide the on-site personnel to debug and maintain.